

# OPEN POWER AI CONSORTIUM



## Uniting the Electric Sector with Advanced AI Solutions

### MISSION STATEMENT

The Open Power AI Consortium aims to evolve the electric sector by leveraging advanced AI technologies to innovate the way electricity is made, moved, and used by customers. By fostering collaboration among industry leaders, researchers, and technology providers, the consortium will drive the development and deployment of cutting-edge AI solutions tailored to enhance operational efficiencies, deploy emerging and sustainable technologies, increase reliability and resiliency, and reduce costs while improving the customer experience.



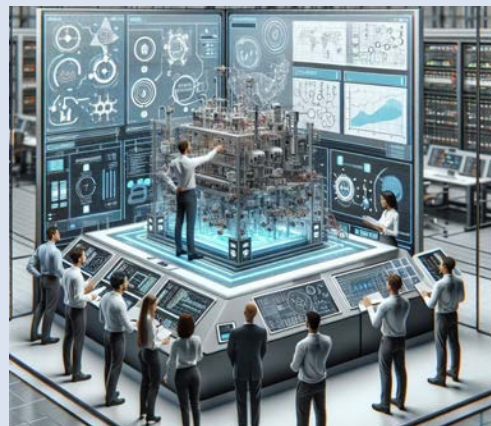
### KEY OBJECTIVES

#### Develop and Maintain Datasets, Open-Source Libraries, AI Accelerators, and AI/Gen AI Models

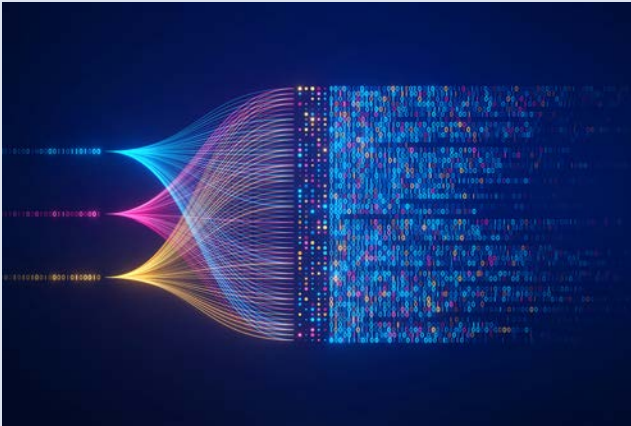
- Collect and curate electric power industry datasets for use with AI model training, testing, and benchmarking.
- Develop and share code libraries and AI accelerators via open-source repositories and EPRI.com.
- Create, train, and update AI and generative AI models tailored to the electric sector.
- Develop AI roadmaps in collaboration with EPRI member utilities and partners.

### AI Sandbox Development and Evaluation

- Establish a collaborative platform where researchers can evaluate AI use cases in a controlled environment.
- Enable consortium members to share their use cases for refinement and evaluation, fostering a culture of innovation and continuous improvement.
- Provide tools and resources for testing and validating AI solutions before deployment in real-world scenarios.



Source:  
Microsoft Copilot



## Support Implementation Partnering with Utilities and their Key AI Technology Providers

- Collaborate with leading AI technology providers to deploy AI use cases using member proprietary data.
- Develop a feedback loop from initial deployments back to the AI sandbox to ensure continuous refinement and optimization of AI solutions.
- Facilitate knowledge sharing and best practices among consortium members to maximize the impact of AI technologies.

### Consortium Members

A diverse, global membership of EPRI member and non-member utilities, academia, research organizations and national labs, technology companies, hyperscalers and AI infrastructure service providers, AI domain-specific model developers and experts and power sector tech companies will bring specialized expertise, resources, and perspectives to the table.

Members can choose how best to contribute according to their organizational needs and available resources, ensuring that the consortium remains flexible and dynamic while driving impactful results. Member engagement can include active participation in meetings, sharing data and insights, providing financial and in-kind contributions.

### Executive Advisory Group

A subset of consortium members comprised of a small group of key EPRI member executives who are leading their digital/AI strategy and use cases, such as Chief Information Officers (CIOs) and Chief Operations Officers (COOs) will provide strategic guidance and oversight to ensure the consortium's initiatives align with industry needs and priorities and facilitate high-level engagement and collaboration among consortium members.



Join us in our journey to revolutionize the electric sector with cutting-edge AI innovations.

Together, we can achieve remarkable advancements and create a sustainable, intelligent future for all.

For more information about the Open Power AI Consortium, visit [www.epri.com](http://www.epri.com) or contact: [OpenPowerAI@epri.com](mailto:OpenPowerAI@epri.com)

For more information, contact:

EPRI Customer Assistance Center  
800.313.3774 • [askepri@epri.com](mailto:askepri@epri.com)



March 2025

EPRI

3420 Hillview Avenue, Palo Alto, California 94304-1338 USA • 650.855.2121 • [www.epri.com](http://www.epri.com)

© 2025 Electric Power Research Institute (EPRI), Inc. All rights reserved. Electric Power Research Institute, EPRI, and TOGETHER...SHAPING THE FUTURE OF ENERGY are registered marks of the Electric Power Research Institute, Inc. in the U.S. and worldwide.